

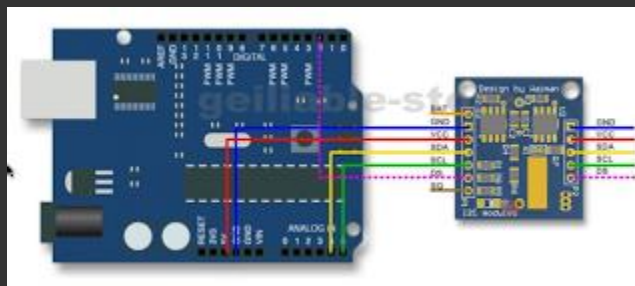
I2C RTC DS1307 AT24C32 Real Time Clock Module

Vendor Description

"This is the DS1307 Real Time Clock developed by one of our designer waiman. The module comes fully assembled and pre-programmed with the current time (ok, so it's our current time - MST). The included Lithium coin cell battery (CR1225 41mAh) will run the module for a minimum of 9 years (17 years typical) without external 5V power. The DS1307 is accessed via the I2C protocol."

- Two wire I2C interface
- Hour : Minutes : Seconds AM/PM
- Day Month, Date - Year
- Size: 28x25x10mm
- Leap year compensation
- Accurate calendar up to year 2100
- DS1307 based RTC with LIR2032 battery (Battery include)
- 1Hz output pin
- 56 Bytes of Non-volatile memory available to user

vendor: [geiliable-store](#)



The DS1307 can be interface to using the Wire library or by Henning Karlson's [custom DS1307](#) library. Use Henning's library if you don't need any other I2C devices and want to save the code space of the Wire library.