

FUSEHOLDERS

Bulgin's extensive range of fuseholders are designed to give the degree of protection demanded in today's sophisticated electronic equipment. Carrying world-wide safety approvals from UL, VDE, CSA and IMQ, all types are manufactured from high grade flame retardant nylon and polyester materials.

Designed primarily for 5 x 20mm and 6.3 x 32mm size fuses with protection against shock to categories PC1, PC2 and PC3. There's a choice of styles for in-line, PCB mounting and panel mounting (screw or snap fit) with terminal options for solder, 2.8mm, 4.8mm or 6.3mm tabs or PC spills.

Dust and waterproof designs provide a front of panel seal to IP68 in both 5 x 20mm and 6.3 x 32mm size fuses.

Fuse carrier styles include captive drawer, screw cap - with screw driver release, bayonet cap - with screw driver release and screw cap - with finger release.

| Type | Fuse Size (mm) | Page |
|-------------------------|----------------|------|
| Captive Carriers | | |
| FX0430 | 5 x 20 | 149 |
| FX0460 | 5 x 20 | 149 |
| FX0461 | 5 x 20 | 158 |
| Panel Mounting | | |
| FX0357 | 5 x 20 | 150 |
| FX0359 | 5 x 20 | 150 |
| FX0367 | 5 x 20 | 150 |
| FX0369/1 | 5 x 20 | 150 |
| FX0369/2 | 5 x 20 | 150 |
| FX0454 | 5 x 20 | 151 |
| FX0454/S | 5 x 20 | 151 |
| FX0455 | 5 x 20 | 151 |
| FX0455/S | 5 x 20 | 151 |
| FX0458/1 | 5 x 20 | 151 |
| FX0458/2 | 5 x 20 | 151 |
| FX0415 | 6.3 x 32 | 152 |
| FX0415/S | 6.3 x 32 | 152 |
| FX0416 | 6.3 x 25 | 152 |
| FX0416/S | 6.3 x 25 | 152 |
| FX0417 | 6.3 x 32 | 153 |
| FX0418/1 | 6.3 x 32 | 153 |
| FX0418/2 | 6.3 x 32 | 153 |
| FX0354 | 5 x 20 | 154 |
| FX0354/S | 5 x 20 | 154 |
| FX0296 | 5 x 20 | 155 |
| FX0296/S | 5 x 20 | 155 |
| FX0296/1 | 5 x 20 | 155 |

| Type | Fuse Size (mm) | Page |
|---------------------------------------|----------------|------|
| Panel Mounting - IP66 and IP68 | | |
| FX0419 | 6.3 x 32 | 156 |
| FX0462 | 5 x 20 | 156 |
| FX0463 | 5 x 20 | 156 |
| FX0345 | 5 x 20 | 157 |
| FX0345/A | 5 x 20 | 157 |
| FX0365 | 5 x 20 | 157 |
| FX0365/A | 5 x 20 | 157 |
| P.C. Mounting | | |
| FX0461 | 5 x 20 | 158 |
| FX0456 | 5 x 20 | 158 |
| FX0457 | 5 x 20 | 158 |
| FX0330 | 5 x 20 | 158 |
| FX0342 | 5 x 20 | 158 |
| FX0442 | 5 x 20 | 159 |
| FX0443 | 5 x 20 | 159 |
| FX0321 | 5 x 20 | 160 |
| Base Mounting | | |
| FX0267 | 5 x 20 | 160 |
| FX0360 | 5 x 20 | 160 |
| FX0326 | 6.3 x 32 | 161 |
| FX0331 | 6.3 x 25 | 161 |
| FX0327 | 6.3 x 32 | 161 |
| In-Line Fuseholders | | |
| FX0180 | 6.3 x 32 | 162 |
| FX0185 | 6.3 x 32 | 162 |
| FX0280 | 6.3 x 25 | 162 |
| FX0285 | 6.3 x 25 | 162 |
| FX0380 | 5 x 20 | 162 |
| FX0385 | 5 x 20 | 162 |
| Fuseholder Accessories | | 163 |

Protection Categories

Category PC1:

No integral protection against electric shock. If required, Designers/Manufacturers must provide additional protection against electric shock on equipment.

Category PC2:

With integral protection against electric shock. Fuseholders shall have live parts inaccessible to IEC 60529 Standard Test Finger, when fully assembled, without fuse carrier or fuse in place and when fuse carrier, with fuse is being inserted or withdrawn.

Category PC3:

With integral protection against electric shock. Fuseholders shall have live parts inaccessible to IEC 60529 1 mm dia. rigid test wire when fully assembled, without fuse carrier or fuse in place and when fuse carrier, with fuse, is being inserted or withdrawn.

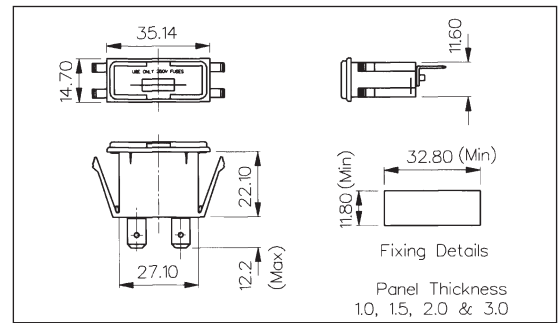
For full definitions see IEC 60127-6 : 1994 Clause 9

Panel/PC Mounting Captive Carriers Touchproof, PC3

SNAP FIT TO PANEL


FX0430/63

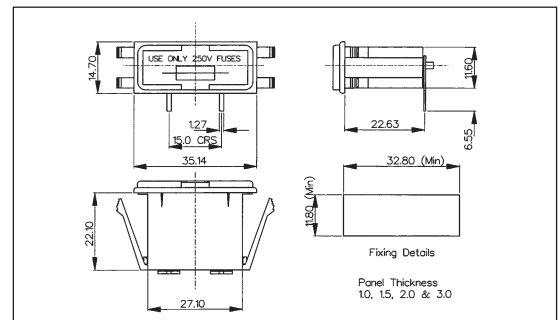
- Protection Category PC3
- Fuse Size 5 x 20mm
- Panel Sizes 1.0, 1.5, 2.0 and 3.0mm
- Captive Drawer
- 10A, 250V (16A, 250V UL)
- 2.8, 4.8 or 6.3 tabs



SNAP FIT TO PANEL


FX0430/PC

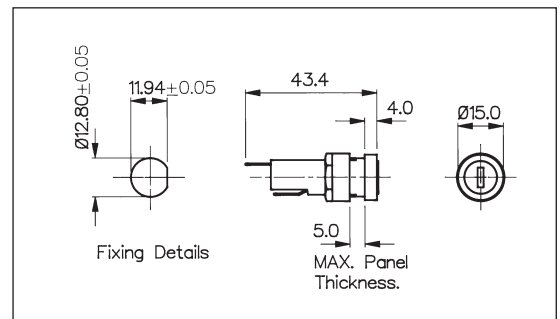
- Protection Category PC3
- Fuse Size 5 x 20mm
- Panel Sizes 1.0, 1.5, 2.0 and 3.0mm
- Captive Drawer
- 10A, 250V (16A, 250V UL)
- PC spills



PANEL MOUNT


FX0460

- Protection Category PC3
- Fuse Size 5 x 20mm
- Screw Cap/Screwdriver Release
- Captive Fuse Carrier
- 10A, 250V (16A, 250V UL)



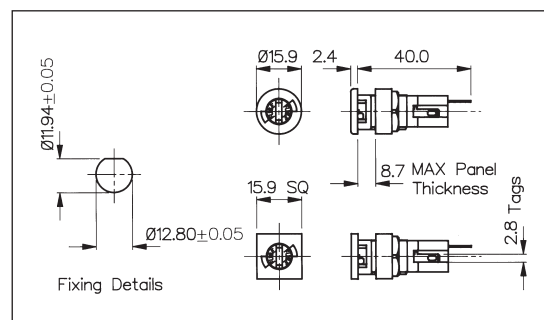
| Specification | FX0430/Termination | FX0430/PC | FX0460 |
|-------------------------|---|---|---|
| Fuse Size: | 5 x 20mm | 5 x 20mm | 5 x 20mm |
| Fuse Carrier: | Captive Drawer | Captive Drawer | Screw cap/Screwdriver release |
| Terminations: | /28 (2.8mm solder), /48 (4.8mm tab), /63 (6.3mm tab) | /PC (PC spills) | Solder tags |
| Max. Rating: | 10A, 250V (16A, 250V a.c. UL) | 10A, 250V (16A, 250V a.c. UL) | 10A, 250V (16A, 250V a.c. UL) |
| Max. Power Dissipation: | 2.5W (@ 23°C) | 2.5W (@ 23°C) | 1.6W (@ 23°C) |
| Insulation Resistance: | >10MΩ @ 500V d.c. | >10MΩ @ 500V d.c. | >10MΩ @ 500V d.c. |
| A.C. Breakdown: | >2kV | >2kV | >2kV |
| Contact Resistance: | <10mΩ | <10mΩ | <10mΩ |
| Operating Temp: | -20°C to +85°C (ambient air temp + fuse temp rise) | -20°C to +85°C (ambient air temp + fuse temp rise) | -20°C to +85°C (ambient air temp + fuse temp rise) |
| Mouldings: | | | |
| Body/Drawer: | Nylon UL94V-0 rated | Nylon UL94V-0 rated | Polyester UL94V-0 rated |
| Cap: | | | Nylon UL94V-0 rated |
| Nut: | | | Glass Filled Nylon UL94V-0 rated |
| Contacts: | Contact tags: Brass, Tin Plated Fuse Clips: Phosphor Bronze, Nickel Plated | Contact tags: Brass, Tin Plated Fuse Clips: Phosphor Bronze, Nickel Plated | Brass, Silver Plated |
| Approvals: | | pending | |
| Accessories: | | | P.No. 11327 (See page 163) |
| Note: | | | See page 164 for PC version |
| RoHS | Compliant | Compliant | Compliant |

Panel Mounting and Snap Fit Touchproof, PC2

PANEL MOUNT



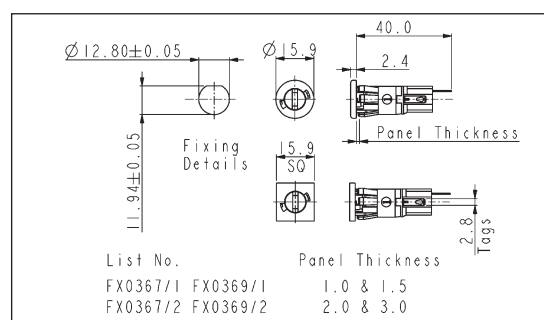
- Protection Category PC2
- Fuse Size 5 x 20mm
- Bayonet Cap/Screwdriver Release
- 10A, 250V (16A, 250V UL)



SNAP FIT TO PANEL



- Protection Category PC2
- Fuse Size 5 x 20mm
- Panel Sizes 1.0 & 1.5 and 2.0 & 3.0mm
- Bayonet Cap/Screwdriver Release
- 10A, 250V (16A, 250V UL)



| Specification | FX0357, FX0359 | FX0367/Panel, FX0369/Panel |
|-------------------------|---|---|
| Fuse Size: | 5 x 20mm | 5 x 20mm |
| Panel Size: | - | /1 (1.0-1.5mm panel, black sleeve) /2 (2.0-3.0mm panel, grey sleeve) |
| Fuse Carrier: | Bayonet cap/Screwdriver release | Bayonet cap/Screwdriver release |
| Terminations: | Solder tags | Solder tags |
| Max. Rating: | 10A, 250V (16A, 250V a.c. UL) | 10A, 250V (16A, 250V a.c. UL) |
| Max. Power Dissipation: | 2.5W (@ 23°C) | 2.5W (@ 23°C) |
| Insulation Resistance: | >10 ² MΩ @ 500V d.c. | >10 ² MΩ @ 500V d.c. |
| A.C. Breakdown: | 7kV @ 50Hz | 7kV @ 50Hz |
| Contact Resistance: | <10mΩ | <10mΩ |
| Operating Temp: | -20°C to +85°C (ambient air temp + fuse temp rise) | -20°C to +85°C (ambient air temp + fuse temp rise) |
| Mouldings: | | |
| Body: | Polyester UL94V-0 rated | Polyester UL94V-0 rated |
| Cap: | Nylon UL94V-0 rated | Nylon UL94V-0 rated |
| Nut: | Glass Filled Nylon UL94V-0 rated | |
| Contacts: | Brass, Silver Plated | Brass, Silver Plated |
| Approvals: | | |
| Accessories: | P.No. 11327 (See page 163) | P.No. 11327 (See page 163) |
| RoHS | Compliant | Compliant |

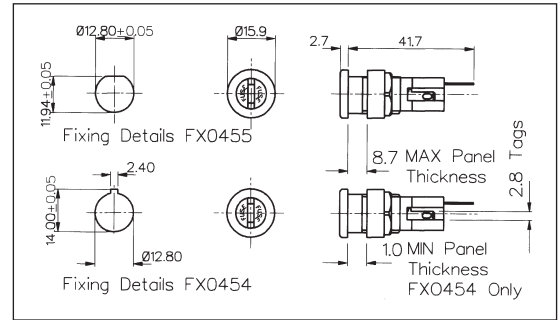
Panel Mounting and Snap Fit Touchproof, PC2

PANEL MOUNT



FX0454, FX0455

- Protection Category PC2
- Fuse Size 5 x 20mm
- Screw Cap/Screwdriver Release
- Keyway Panel Cutout (FX0454)
- D Panel Cutout (FX0455)
- 10A, 250V (16A, 250V UL)

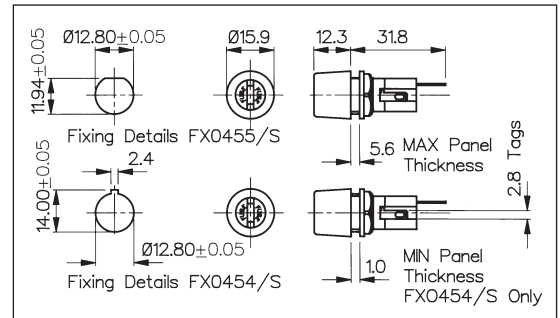


PANEL MOUNT



FX0454/S, FX0455/S

- Protection Category PC2
- Fuse Size 5 x 20mm
- Screw Cap/Screwdriver Release
- High Profile Bezel
- Keyway Panel Cutout (FX0454/S)
- D Panel Cutout (FX0455/S)
- 10A, 250V (16A, 250V UL)

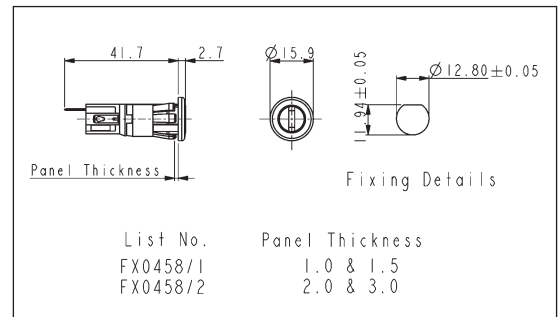


SNAP FIT TO PANEL



FX0458

- Protection Category PC2
- Fuse Size 5 x 20mm
- Panel Sizes 1.0 & 1.5 and 2.0 & 3.0mm
- Screw Cap/Screwdriver Release
- 10A, 250V (16A, 250V UL)



| Specification | FX0454, FX0455 | FX0454/S, FX0455/S | FX0458/Panel |
|-------------------------|---|---|---|
| Fuse Size: | 5 x 20mm | 5 x 20mm | 5 x 20mm |
| Panel Size: | - | - | /1 (1.0-1.5mm panel, black sleeve) /2 (2.0-3.0mm panel, grey sleeve) |
| Fuse Carrier: | Screw cap/Screwdriver release | Screw cap/Screwdriver release | Screw cap/Screwdriver release |
| Terminations: | Solder tags | Solder tags | Solder tags |
| Max. Rating: | 10A, 250V (16A, 250V a.c. UL) | 10A, 250V (16A, 250V a.c. UL) | 10A, 250V (16A, 250V a.c. UL) |
| Max. Power Dissipation: | 2.5W (@ 23°C) | 2.5W (@ 23°C) | 2.5W (@ 23°C) |
| Insulation Resistance: | >10 ² MΩ @ 500V d.c. | >10 ² MΩ @ 500V d.c. | >10 ² MΩ @ 500V d.c. |
| A.C. Breakdown: | 7kV @ 50Hz | 7kV @ 50Hz | >7kV @ 50Hz |
| Contact Resistance: | <10mΩ | <10mΩ | <10mΩ |
| Operating Temp: | -20°C to +85°C (ambient air temp + fuse temp rise) | -20°C to +85°C (ambient air temp + fuse temp rise) | -20°C to +85°C (ambient air temp + fuse temp rise) |
| Mouldings: | | | |
| Body: | Polyester UL94V-0 rated | Polyester UL94V-0 rated | Polyester UL94V-0 rated |
| Cap: | Nylon UL94V-0 rated | Nylon UL94V-0 rated | Nylon UL94V-0 rated |
| Nut: | Glass Filled Nylon UL94V-0 rated | Glass Filled Nylon UL94V-0 rated | |
| Contacts: | Brass, Silver Plated | Brass, Silver Plated | Brass, Silver Plated |
| Approvals: | | | |
| Accessories: | P.Nos. 11327, 12297 & 12298 (See page 163) | P.Nos. 11327, 12297 & 12298 (See page 163) | P.No. 11327 (See page 163) |
| RoHS | Compliant | Compliant | Compliant |

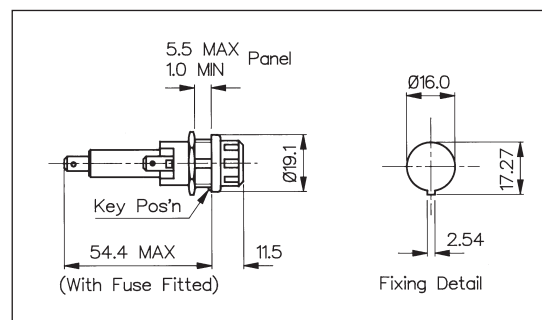
Panel Mounting Touchproof, PC2

PANEL MOUNT



FX0415, FX0416

- Protection Category PC2
- Fuse Sizes:
6.3 x 32mm (FX0415)
6.3 x 25mm (FX0416)
- Screw Cap/Hand Release
- 13A, 250V (16A, 250V UL)

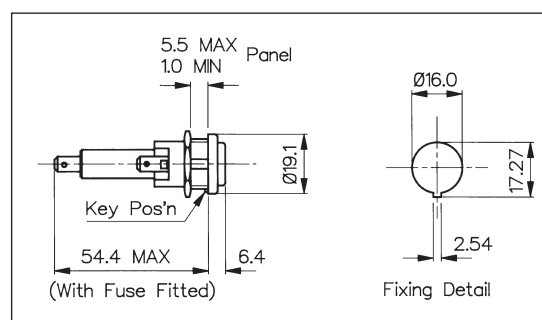


PANEL MOUNT



FX0415/S, FX0416/S

- Protection Category PC2
- Fuse Sizes:
6.3 x 32mm (FX0415/S)
6.3 x 25mm (FX0416/S)
- Screw Cap/Screwdriver Release
- 13A, 250V (16A, 250V UL)



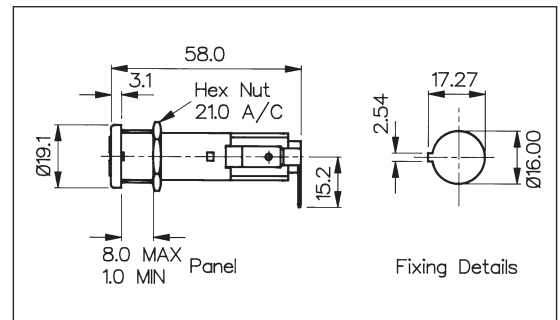
| Specification | FX0415, FX0416 | FX0415/S, FX0416/S |
|-------------------------|---|---|
| Fuse Size: | FX0415 - 6.3 x 32mm FX0416 - 6.3 x 25mm | FX0415/S - 6.3 x 32mm FX0416/S - 6.3 x 25mm |
| Fuse Carrier: | Screw cap/Hand release | Screw cap/Screwdriver release |
| Terminations: | 4.8 series tabs | 4.8 series tabs |
| Max. Rating: | 13A, 250V (16A, 250V UL) | 13A, 250V (16A, 250V UL) |
| Max. Power Dissipation: | 4W (@ 23°C) | 4W (@ 23°C) |
| Insulation Resistance: | >10 ⁵ MΩ @ 500V d.c. | >10 ⁵ MΩ @ 500V d.c. |
| A.C. Breakdown: | 4kV @ 50Hz | 4kV @ 50Hz |
| Contact Resistance: | <5mΩ | <5mΩ |
| Operating Temp: | -20°C to +85°C (ambient air temp + fuse temp rise) | -20°C to +85°C (ambient air temp + fuse temp rise) |
| Mouldings: | | |
| Body: | Glass Filled Nylon UL94V-0 rated | Glass Filled Nylon UL94V-0 rated |
| Cap: | Nylon UL94V-0 rated | Nylon UL94V-0 rated |
| Sleeve: | Polyester UL94V-0 rated | Polyester UL94V-0 rated |
| Contacts: | Brass, Silver Plated | Brass, Silver Plated |
| Approvals: | | |
| Accessories: | P.No. 12932 (See page 163) | P.No. 12932 (See page 163) |
| RoHS | Compliant | Compliant |

Panel Mounting and Snap Fit Touchproof, PC2

PANEL MOUNT

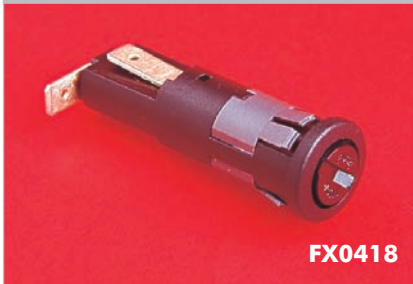

FX0417

- Protection Category PC2
- Fuse Size 6.3 x 32mm
- Screw Cap/Screwdriver Release
- 16A, 250V (20A, 250V UL)

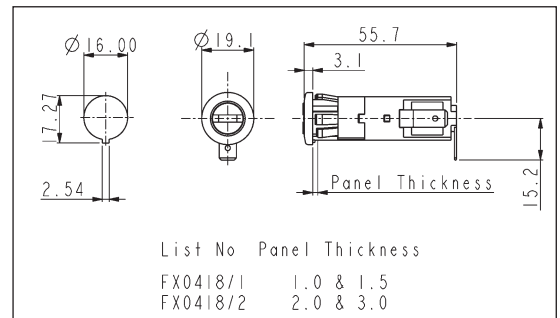


Fixing Details

SNAP FIT TO PANEL


FX0418

- Protection Category PC2
- Fuse Size 6.3 x 32mm
- Panel Sizes 1.0 & 1.5 and 2.0 & 3.0mm
- Screw Cap/Screwdriver Release
- 16A, 250V (20A, 250V UL)



| Specification | FX0417 | FX0418/Panel |
|-------------------------|---|---|
| Fuse Size: | 6.3 x 32mm | 6.3 x 32mm |
| Panel Size: | - | /1 (1.0-1.5mm panel, black sleeve) /2 (2.0-3.0mm panel, grey sleeve) |
| Fuse Carrier: | Screw cap/Screwdriver release | Screw cap/Screwdriver release |
| Terminations: | 6.3 series tabs | 6.3 series tabs |
| Max. Rating: | 16A, 250V 20A, 250V a.c. UL | 16A, 250V 20A, 250V a.c. UL |
| Max. Power Dissipation: | 4W (@ 23°C) | 4W (@ 23°C) |
| Insulation Resistance: | >10 ⁶ MΩ @ 500V d.c. | >10 ⁶ MΩ @ 500V d.c. |
| A.C. Breakdown: | >2kV | >2kV |
| Contact Resistance: | <10mΩ | <10mΩ |
| Operating Temp: | -20°C to +85°C (ambient air temp + fuse temp rise) | -20°C to +85°C (ambient air temp + fuse temp rise) |
| Mouldings: | | |
| Body: | Glass Filled Polyester UL94V-0 rated | Glass Filled Polyester UL94V-0 rated |
| Cap: | Nylon UL94V-0 rated | Nylon UL94V-0 rated |
| Sleeve: | Polyester UL94V-0 rated | Polyester UL94V-0 rated |
| Contacts: | Brass, Silver Plated | Brass, Silver Plated |
| Approvals: | | |
| RoHS | Compliant | Compliant |

Panel Mounting, PC2

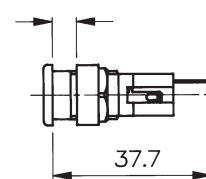
PANEL MOUNT



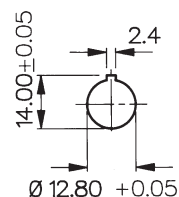
FX0354

- Protection Category PC2
- Low Profile Bezel
- Fuse Size 5 x 20mm
- Screw Cap/Screwdriver Release
- Keyway Panel Cutout
- 6.3A, 250V

6.4 MAX Panel
0.8 MIN PANEL



Fixing Details



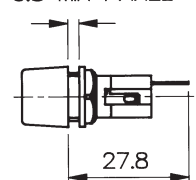
PANEL MOUNT



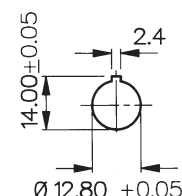
FX0354/S

- Protection Category PC2
- High Profile Bezel
- Fuse Size 5 x 20mm
- Screw Cap/Screwdriver Release
- Keyway Panel Cutout
- 6.3A, 250V

2.4 MAX Panel
0.8 MIN PANEL



Fixing Details



Specification

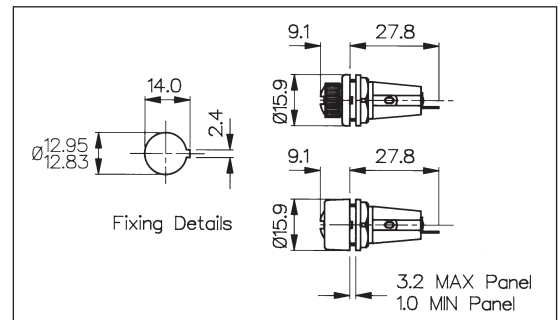
FX0354

FX0354/S

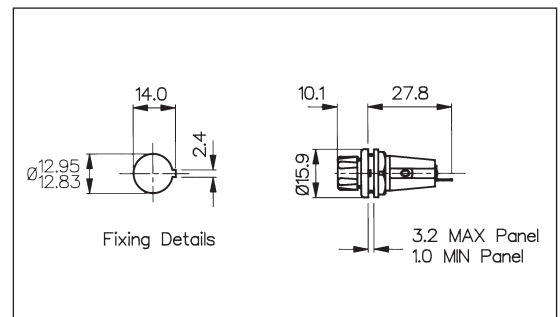
| | | |
|--------------------------------|---|---|
| Fuse Size: | 5 x 20mm | 5 x 20mm |
| Fuse Carrier: | Screw cap/Screwdriver release | Screw cap/Screwdriver release |
| Terminations: | Solder tags | Solder tags |
| Max. Rating: | 6.3A, 250V | 6.3A, 250V |
| Max. Power Dissipation: | 2.5W (@ 23°C) | 2.5W (@ 23°C) |
| Insulation Resistance: | >10 ² MΩ @ 500V d.c. | >10 ² MΩ @ 500V d.c. |
| A.C. Breakdown: | 5kV @ 50Hz | 5kV @ 50Hz |
| Contact Resistance: | <10mΩ | <10mΩ |
| Operating Temp: | -20°C to +85°C (ambient air temp + fuse temp rise) | -20°C to +85°C (ambient air temp + fuse temp rise) |
| Mouldings: | | |
| Body: | Polyester UL94V-0 rated | Polyester UL94V-0 rated |
| Cap: | Nylon UL94V-0 rated | Nylon UL94V-0 rated |
| Nut: | Glass Filled Nylon UL94V-0 rated | Glass Filled Nylon UL94V-0 rated |
| Contacts: | Brass, Silver Plated | Brass, Silver Plated |
| Approvals: | | |
| Accessories: | P.No. 11327 and 12298 (See page 163) | P.No. 11327 and 12297 (See page 163) |
| RoHS | Compliant | Compliant |

Panel Mounting, PC1
PANEL MOUNT


- Protection Category PC1
- Fuse Size 5 x 20mm
- Screw Cap/Hand Release
- 6.3A, 250V

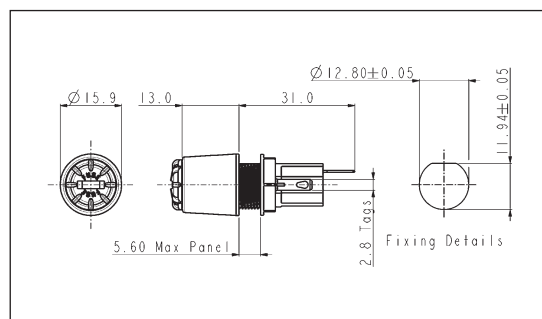
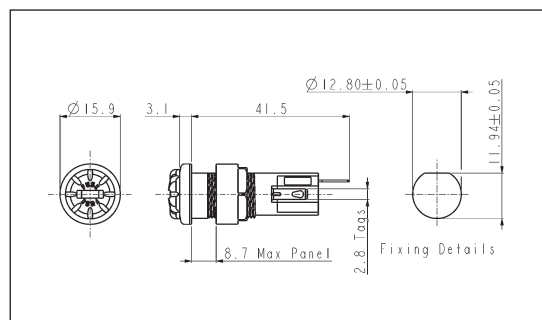
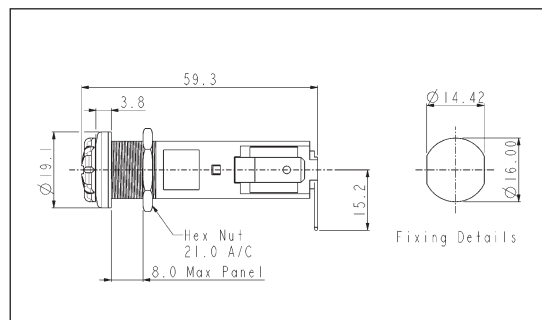

PANEL MOUNT


- Protection Category PC1
- Fuse Size 5 x 20mm
- Screw Cap/Hand Release
- 6.3A, 250V



| Specification | FX0296, FX0296/S | FX0296/1 |
|-------------------------|---|---|
| Fuse Size: | 5 x 20mm | 5 x 20mm |
| Fuse Carrier: | FX0296 Screw cap/Hand release FX0296/S Screw cap/Screwdriver release | Screw cap/Hand release |
| Terminations: | Solder tags | Solder tags |
| Max. Rating: | 6.3A, 250V | 6.3A, 250V |
| Max. Power Dissipation: | 2.5W (@ 23°C) | 2.5W (@ 23°C) |
| Insulation Resistance: | >10 ⁵ MΩ @ 500V d.c. | >10 ⁵ MΩ @ 500V d.c. |
| A.C. Breakdown: | 2.5kV @ 50Hz | 2.5kV @ 50Hz |
| Contact Resistance: | <5mΩ | <5mΩ |
| Operating Temp: | -20°C to +85°C (ambient air temp + fuse temp rise) | -20°C to +85°C (ambient air temp + fuse temp rise) |
| Mouldings: | | |
| Body: | Glass Filled Nylon UL94V-0 rated | Glass Filled Nylon UL94V-0 rated |
| Cap: | Nylon UL94V-0 rated | Nylon UL94V-0 rated |
| Nut: | Glass Filled Nylon UL94V-0 rated | Glass Filled Nylon UL94V-0 rated |
| Contacts: | Brass, Silver or Tin Plated | Brass, Silver or Tin Plated |
| Accessories: | P.No. 9820 (See page 163) | P.No. 9820 (See page 163) |
| RoHS | Compliant | Compliant |

PANEL MOUNT



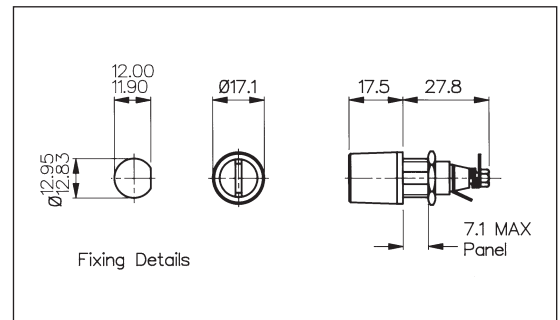
FUSEHOLDERS

Panel Mounting Sealed to IP66, PC1

HIGH PROFILE PANEL MOUNT


FX0345

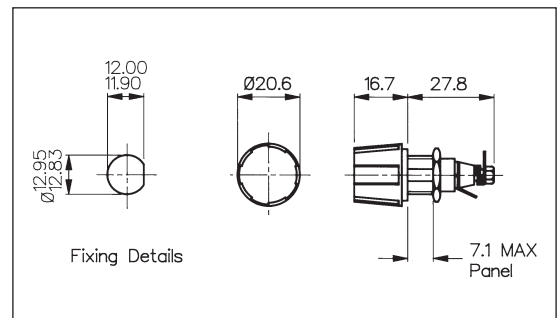
- Sealed to IP66
- Protection Category PC1
- Fuse Size 5 x 20mm
- Screw Cap/Screwdriver Release
- 6.3A, 250V



HIGH PROFILE PANEL MOUNT


FX0365

- Sealed to IP66
- Protection Category PC1
- Fuse Size 5 x 20mm
- Screw Cap/Hand Release
- Large Cap for Easy Grip
- 6.3A, 250V



| Specification | FX0345, FX0345/A | FX0365, FX0365/A |
|-------------------------|--|--|
| Fuse Size: | 5 x 20mm | 5 x 20mm |
| Fuse Carrier: | Screw cap/Screwdriver release | Screw cap/Hand release. Large ribbed cap allows removal with gloved hand |
| Terminations: | Solder tags | Solder tags |
| Max. Rating: | 6.3A, 250V | 6.3A, 250V |
| Max. Power Dissipation: | 4W (@ 23°C) | 4W (@ 23°C) |
| Insulation Resistance: | >10 ³ MΩ @ 500V d.c. | >10 ³ MΩ @ 500V d.c. |
| A.C. Breakdown: | >3.5kV @ 50Hz | >3.5kV @ 50Hz |
| Contact Resistance: | <10mΩ | <10mΩ |
| Operating Temp: | -20°C to +85°C (ambient air temp + fuse temp rise) | -20°C to +85°C (ambient air temp + fuse temp rise) |
| Mouldings: | | |
| Body & Cap: | Glass Filled Nylon UL94V-0 rated | Glass Filled Nylon UL94V-0 rated |
| Spacer: | Glass Filled Nylon UL94HB rated | Glass Filled Nylon UL94HB rated |
| Insulating Sleeve: | Nylon UL94V-0 rated | Nylon UL94V-0 rated |
| Contacts: | Brass, Silver Plated | Brass, Silver Plated |
| Sealing: | Protection Classification IP66 to BS 60529:1992 Retains sealing integrity with cap removed since they are both panel and barrier sealed | |
| Variants: | /A Silicone 'O' ring, Op. Temp. -55°C to +85°C | /A Silicone 'O' ring, Op. Temp. -55°C to +85°C |
| RoHS | Compliant | Compliant |

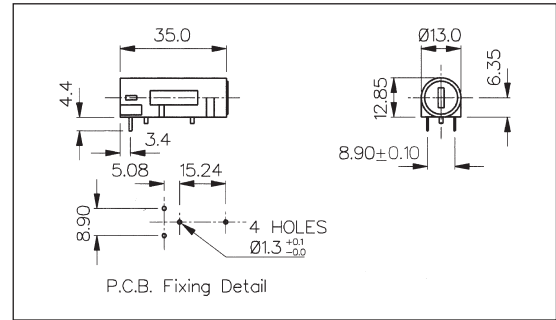
PC Mounting PC1, PC2 and PC3

PC HORIZONTAL MOUNT



- Protection Category PC3
- Fuse Size 5 x 20mm
- Screw Cap/Screwdriver Release
- Captive Fuse Carrier
- PC Spills
- 10A, 250V (16A, 250V UL)

FX0461



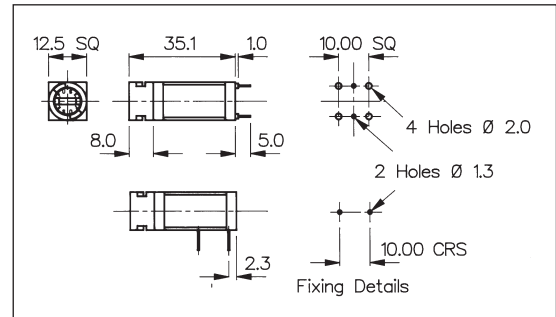
PC HORIZONTAL AND VERTICAL MOUNT



- Protection Category PC2
- Fuse Sizes 5 x 20mm
- Bayonet Cap/Screwdriver Release
- 10A, 250V

FX0457

FX0456



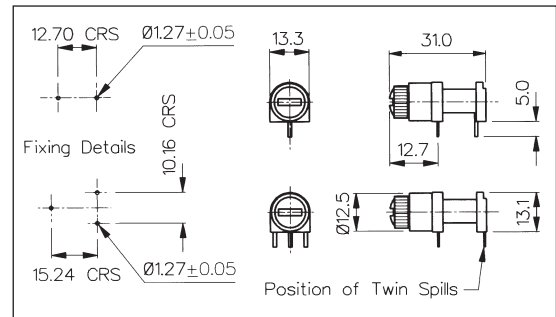
PC HORIZONTAL MOUNT



- Protection Category PC1
- Fuse Size 5 x 20mm
- Two or Three PC Spills
- Screw Cap/Hand Release
- 6.3A, 250V

FX0330

FX0342

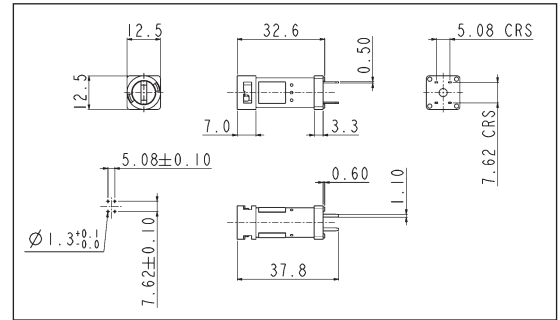


| Specification | FX0461 | FX0456, FX0457 | FX0330, FX0342 |
|---|-------------------------------|---------------------------------|--|
| Fuse Size: | 5 x 20mm | 5 x 20mm | 5 x 20mm |
| Fuse Carrier: | Screw cap/Screwdriver release | Bayonet cap/Screwdriver release | Screw cap/Hand release |
| Terminations: | PC Spills | PC Spills | FX0330 - 3 PC Spills FX0342 - 2 PC Spills |
| Max. Rating: | 10A, 250V (16A, 250V a.c. UL) | 10A, 250V | 6.3A, 250V |
| Max. Power Dissipation: | 1.6W (@ 23°C) | 2.5W (@ 23°C) | 2.5W (@ 23°C) |
| Insulation Resistance: | >10MΩ @ 500V d.c. | >10 ² MΩ @ 500V d.c. | >10 ⁴ MΩ @ 500V d.c. |
| A.C. Breakdown: | >2kV | 4kV @ 50Hz | 6kV @ 50Hz |
| Contact Resistance: | <10mΩ | <10mΩ | <5mΩ |
| Operating Temp: (ambient air temp + fuse temp rise) | -20°C to +85°C | -20°C to +85°C | -20°C to +85°C |
| Mouldings: | | | |
| Body: | Polyester UL94V-0 rated | Polyester UL94V-0 rated | Glass Filled Nylon UL94V-0 rated |
| Cap: | Nylon UL94V-0 rated | Nylon UL94V-0 rated | Nylon UL94V-0 rated |
| End Bung: | | Polyester UL94V-0 rated | |
| Contacts: | Brass, Silver Plated | Brass, Silver Plated | Brass, Tin Plated |
| Approvals: | | | |
| RoHS | Compliant | Compliant | Compliant |

PC Mounting PC2
PC VERTICAL MOUNT

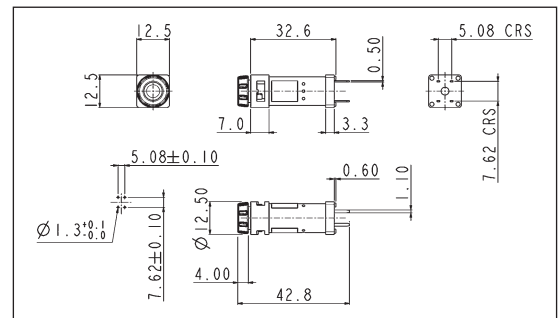
FX0442

- Protection Category PC2
- Fuse Size 5 x 20mm
- Bayonet cap/Screwdriver Release
- PC Spills
- 10A, 250V


PC VERTICAL MOUNT

FX0443

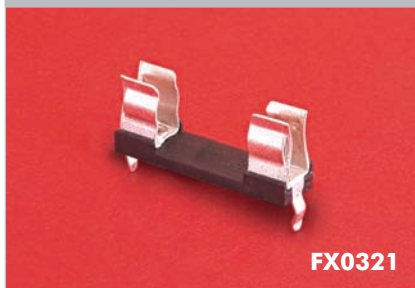
- Protection Category PC2
- Fuse Size 5 x 20mm
- Bayonet cap/Hand Release
- PC Spills
- 10A, 250V



| Specification | FX0442 | FX0443 |
|---|---------------------------------|--------------------------|
| Fuse Size: | 5 x 20mm | 5 x 20mm |
| Fuse Carrier: | Bayonet cap/Screwdriver release | Bayonet cap/Hand release |
| Terminations: | PC Spills | PC Spills |
| Max. Rating: | 10A, 250V | 10A, 250V |
| Max. Power Dissipation: | 2.5W (@ Ta 23°C) | 2.5W (@ Ta 23°C) |
| Insulation Resistance: | >10MΩ @ 500V d.c. | >10MΩ @ 500V d.c. |
| A.C. Breakdown: | >2kV | >2kV |
| Contact Resistance: | <10mΩ | <10mΩ |
| Operating Temp: (ambient air temp + fuse temp rise) | -20°C to +85°C | -20°C to +85°C |
| Mouldings: | | |
| Body: | Polyester UL94V-0 rated | Polyester UL94V-0 rated |
| Cap: | Nylon UL94V-0 rated | Nylon UL94V-0 rated |
| Contacts: | Tin plated, copper alloy | Tin plated, copper alloy |
| Approvals: | | |
| RoHS | Compliant | Compliant |

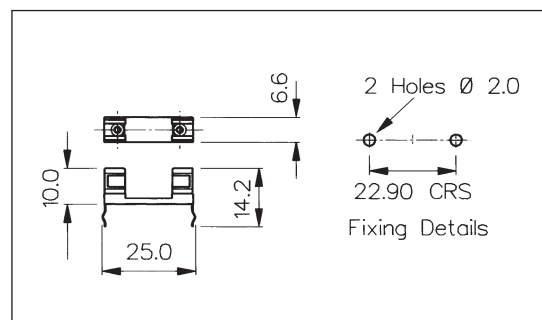
PC and Base Mounting, PC1

PC MOUNT

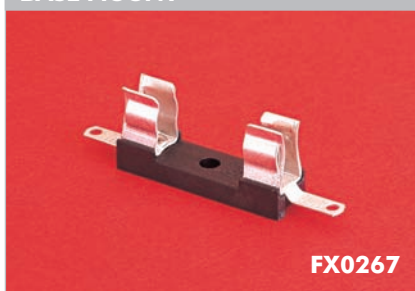


- Protection Category PC1
- Fuse Size 5 x 20mm
- PC Spills
- 6.3A, 250V

FX0321

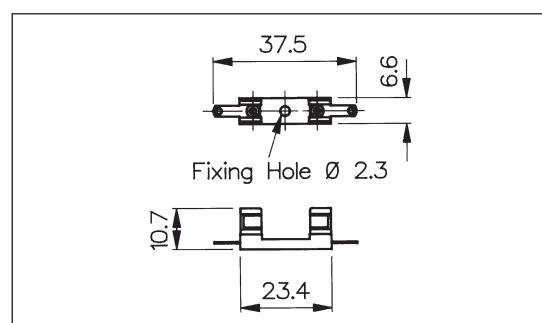


BASE MOUNT

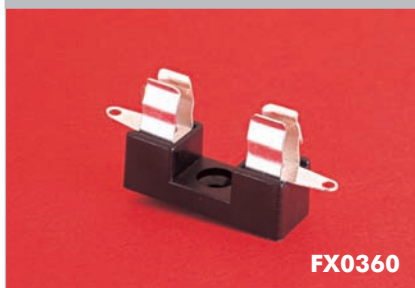


- Protection Category PC1
- Fuse Size 5 x 20mm
- Solder Tags
- 6.3A, 250V

FX0267

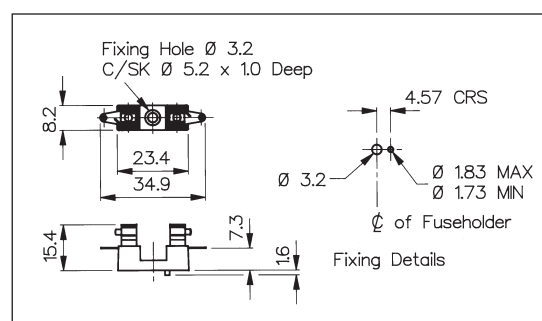


BASE MOUNT

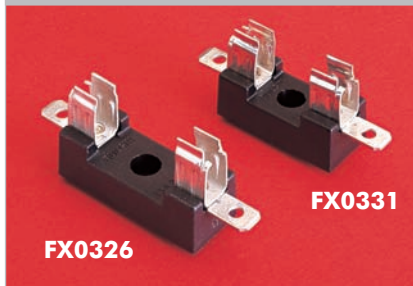


- Protection Category PC1
- Fuse Size 5 x 20mm
- Solder Tags
- 6.3A, 250V

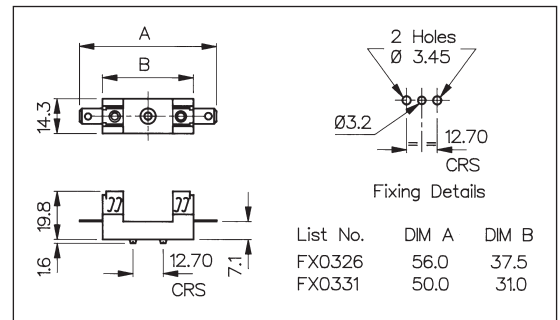
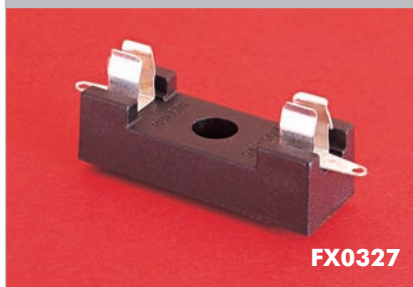
FX0360



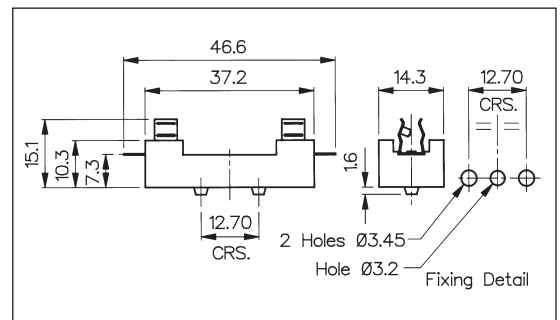
| Specification | FX0321 | FX0267 | FX0360 |
|---|----------------------------------|----------------------------------|---------------------------------|
| Fuse Size: | 5 x 20mm | 5 x 20mm | 5 x 20mm |
| Terminations: | PC Spills | Solder tags | Solder tags |
| Max. Rating: | 6.3A, 250V | 6.3A, 250V | 6.3A, 250V |
| Insulation Resistance: | >10 ⁵ MΩ @ 500V d.c. | >10 ⁵ MΩ @ 500V d.c. | >10 ⁴ MΩ @ 500V d.c. |
| A.C. Breakdown: | 7kV @ 50Hz (Clip to clip) | 1.5kV @ 50Hz | 2kV @ 50Hz |
| Contact Resistance: | <10mΩ | <10mΩ | <10mΩ |
| Operating Temp: (ambient air temp + fuse temp rise) | -20°C to +85°C | -20°C to +85°C | -20°C to +85°C |
| Base Material: | Glass Filled Nylon UL94V-0 rated | Glass Filled Nylon UL94V-0 rated | Glass Filled Nylon UL94HB rated |
| Contacts: | Phosphor Bronze, Tin Plated | Phosphor Bronze, Tin Plated | Phosphor Bronze, Tin Plated |
| Accessories: | P.No. 12760 (See page 163) | P.No. 12760 (See page 163) | |
| RoHS | Compliant | Compliant | Compliant |

Base Mounting, PC1
BASE MOUNT


- Protection Category PC1
- Fuse Sizes:
6.3 x 32mm (FX0326)
6.3 x 25mm (FX0331)
- Solder Tags
- 13A, 250V


BASE MOUNT


- Protection Category PC1
- Fuse Size 6.3 x 32mm
- Solder Tags
- 5A, 250V



| Specification | FX0326, FX0331 | FX0327 |
|---|---|--------------------------------------|
| Fuse Size: | FX0326 - 6.3 x 32mm FX0331 - 6.3 x 25mm | 6.3 x 32mm |
| Terminations: | 6.3 series tabs | Solder tags |
| Max. Rating: | 13A, 250V | 5A, 250V |
| Insulation Resistance: | >10 ⁴ MΩ @ 500V d.c. | >10 ⁵ MΩ @ 500V d.c. |
| A.C. Breakdown: | 5kV @ 50Hz | 5kV @ 50Hz |
| Contact Resistance: | <5mΩ | <10mΩ |
| Operating Temp: (ambient air temp + fuse temp rise) | -20°C to +85°C | -20°C to +85°C |
| Base Material: | Glass Filled Polyester UL94V-0 rated | Glass Filled Polyester UL94V-0 rated |
| Contacts: | Clips: Phosphor Bronze, Tin Plated Tabs: Brass, Tin Plated | Phosphor Bronze, Tin Plated |
| RoHS | Compliant | Compliant |

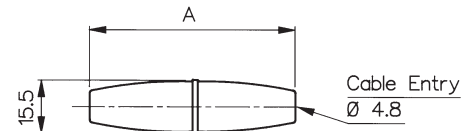
In-Line PC1 and In-Line Sealed to IP66, PC1

IN-LINE



FX0180, FX0280, FX0380

- Protection Category PC1
- Fuse Sizes 5 x 20mm, 6.3 x 25mm and 6.3 x 32mm
- Screw Terminal (Solder to order)
- 10A, 50V (250V Inaccessible)
- UL Approved
- Clear or black



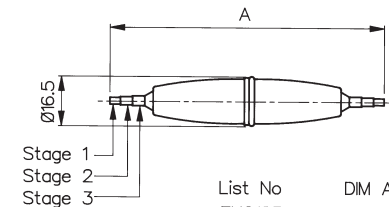
| List No. | DIM A |
|----------|-------|
| FX0180 | 60.3 |
| FX0280 | 54.5 |
| FX0380 | 48.6 |

IN-LINE



FX0185, FX0285, FX0385

- Sealed to IP66
- Protection Category PC1
- Fuse Sizes 5 x 20mm, 6.3 x 25mm and 6.3 x 32mm
- Screw Terminal (Solder to order)
- 10A, 50V (250V Inaccessible)
- UL Approved
- Clear or black



| List No. | DIM A |
|----------|-------|
| FX0185 | 91.0 |
| FX0285 | 85.2 |
| FX0385 | 79.2 |

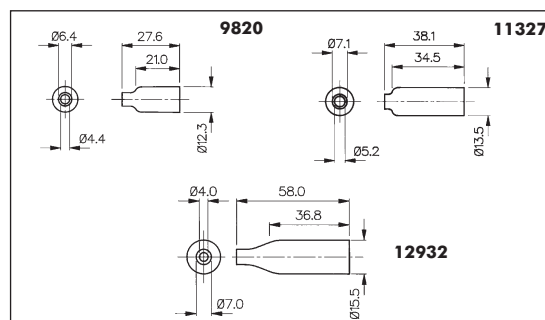
| Specification | FX0180, FX0280, FX0380/Colour | FX0185, FX0285, FX0385/Colour |
|--|---|---|
| Fuse Size: | 5 x 20mm FX0380 6.3 x 25mm FX0280 6.3 x 32mm FX0180 | 5 x 20mm FX0385 6.3 x 25mm FX0285 6.3 x 32mm FX0185 |
| Cable Acceptance: | 1mm ² conductor (max.) | 1mm ² conductor (max.) 1mm to 2.64mm overall diameter Stepped grommet: Stage 1: 1.00mm to 1.40mm Stage 2: 1.50mm to 1.90mm Stage 3: 2.0mm to 2.64mm |
| Terminations: | Screw terminal (solder to order) | Screw Terminal (solder to order) |
| Max. Rating: | 10A, 50V (250V where inaccessible inside equipment) | 10A, 50V (250V where inaccessible inside equipment) |
| Insulation Resistance: | >10 ⁵ MΩ @ 500V d.c. | >10 ⁵ MΩ @ 500V d.c. |
| High Voltage Proof Test: | 2kV (50Hz for 1 minute) | 2kV (50Hz for 1 minute) |
| Contact Resistance: | <10mΩ | <10mΩ |
| Operating Temp.: (ambient air temp + fuse temp rise) | -20°C to +90°C | -20°C to +70°C |
| Sealing: | | Protection Classification IP66 BS60529: 1992 |
| Mouldings: | | |
| Body - Clear: | Polybutene UL94HB rated | Polybutene UL94HB rated |
| Body - Black: | Nylon 6 UL94V-0 rated | Nylon 6 UL94V-0 rated |
| Grommet: | | PVC |
| O Ring: | | Nitrile |
| Contacts: | | |
| Terminals: | Brass, Nickel Plated | Brass, Nickel Plated |
| Grub Screw: | Stainless Steel | Stainless Steel |
| Approvals: | | |
| Colour: | Clear - no suffix, /BK - Black | Clear - no suffix, /BK - Black |
| RoHS | Compliant | Compliant |

Accessories

INSULATION BOOTS



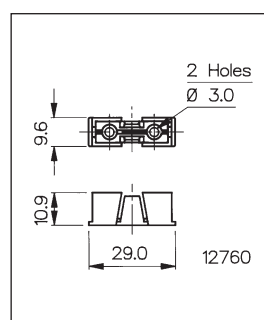
- Provide Insulation against Shock on Rear of Fuseholder
- PVC
- UL94V-0 rated flame retardant material



INSULATION COVER



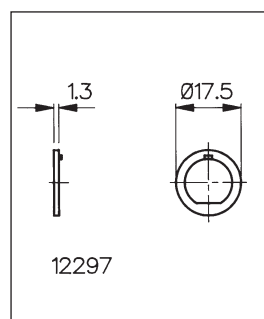
- Provide Insulation from Live Parts on Fuseholder
- Clear
- Polycarbonate



ADAPTOR



- Adaptor to Convert Fixing Holes
- Maintains Anti-Rotation
- Glass Filled Nylon



Accessories

For Use With:

| | |
|-----------------------------|--|
| PNo. 9820 (Boot) | FX0296, FX0296/1, FX0296/S |
| PNo. 11327 (Boot) | FX0354, FX0354/S, FX0357, FX0359, FX0454, FX0454/S, FX0455, FX0455/S, FX0460, FX0458, FX0367, FX0369, FX0462, FX0463 |
| PNo. 12932 (Boot) | FX0415, FX0415/S, FX0416, FX0416/S |
| PNo. 12760 (Cover) | FX0267, FX0321 |
| Max. Working Voltage: | 250V a.c. |
| Flash Tested to: | 2kV a.c. |
| Material: | P.Nos. 9820, 11327, 12932: PVC - UL94V-0 P.No. 12760: Polycarbonate |
| PNo. 12297 (Adaptor Washer) | Adapts 'D' fixing to anti-rotation Key Fixing FX0455, FX0455/S |
| Material: | Glass Filled Nylon |
| RoHS | Compliant |

