



## **ArduinoXbee shield V5 Expansion Shield V5 Xbee Sensor Shield RS485 ForArduino -blue**

ArduinoXbee sensor expansion board V5 containing RS485 bus / wireless data transmission / Bluetooth serial port

Arduino is an open source control panel, very suitable for electronic production-loving friends to create interactive works, but some are not familiar with electronic technology, to add on the Arduino circuit is a trouble some things, so we designed a sensor extension board, make the most of the sensor and Arduino control board connection.

Performance:

- 1) Extension of 14 digital IO port (12 Servo Interface) and power;
- 2) 6 analog IO ports and power;
- 3) a digital port to an external power supply terminal;
- 4) digital port external power supply and onboard power supply automatic switching;
- 5) an external power supply input terminal and an input pin;
- 6) RS485 interface;
- 7) Reset button;
- 8) xbee / Bluetooth Bee Bluetooth wireless data transfer interface;
- 9 the) APC220/Bluetooth V3 Bluetooth wireless data transmission interface;
- 10) IIC/I2C/TWI interface;
- 11) 3.3V output port;
- 12) SD card module interface;

<b>Quantity</b>	1
<b>Color</b>	Blue
<b>Material</b>	PCB
<b>Features</b>	Support Xbee (Xbee pro) / RS485 / APC220 / SD card; 6 analog input with Power, GND
<b>Application</b>	Arduino DIY project
<b>Packing List</b>	1 x IO expansion shield V5

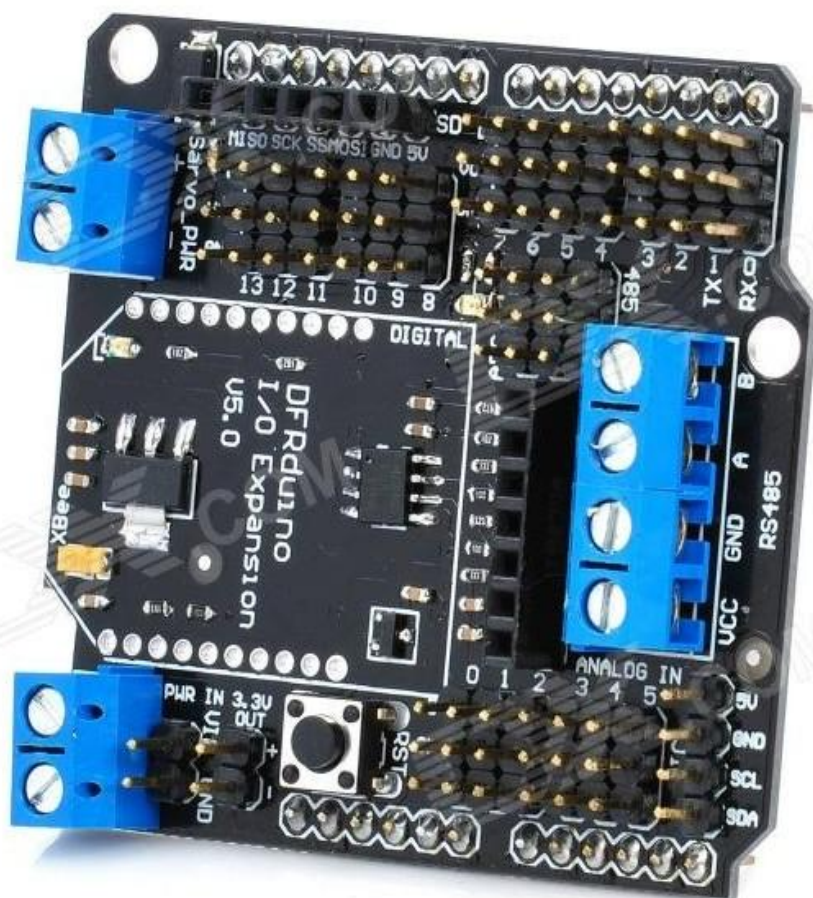
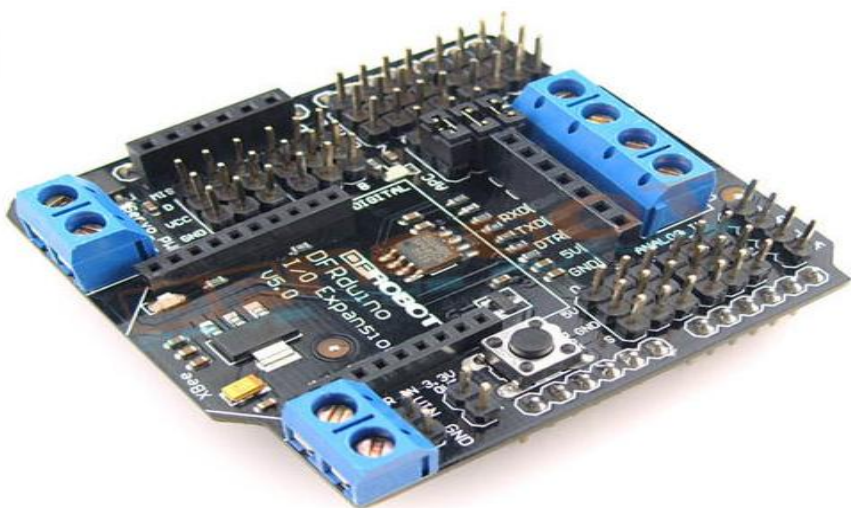
**Specifications:**

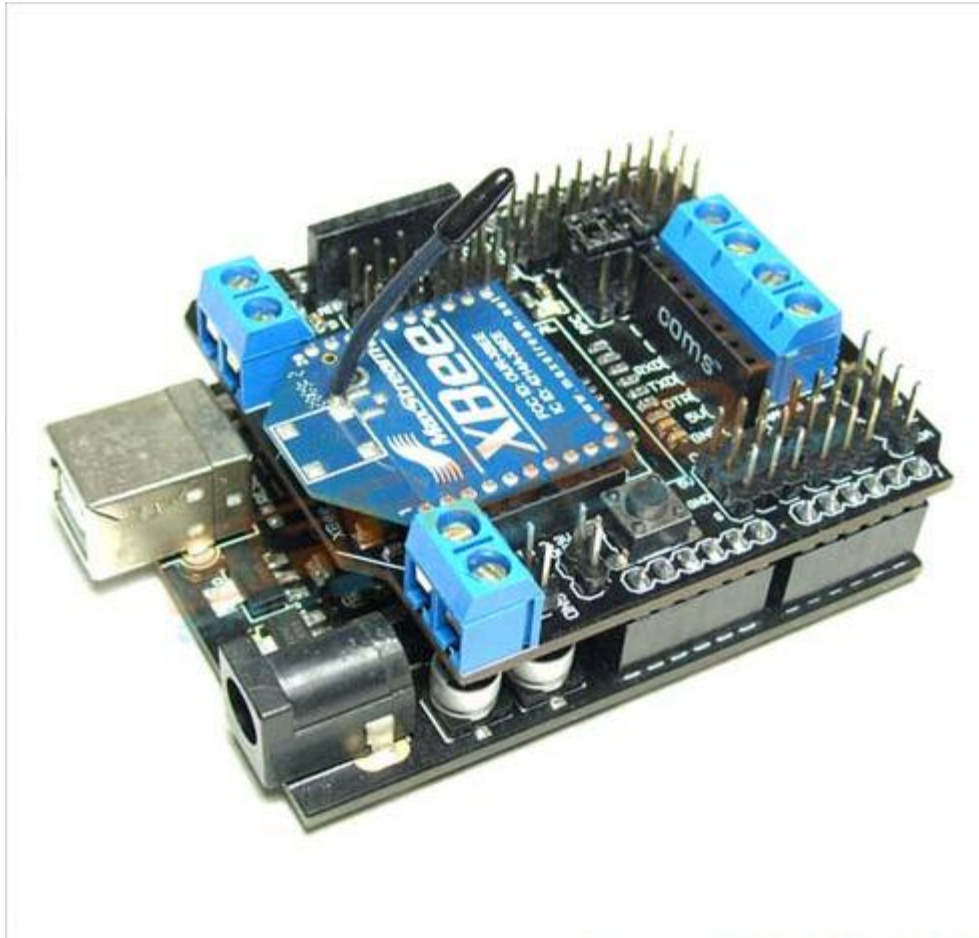
Item: Arduino xbee V5

Item: IO Expansion Shield V5 Xbee Sensor Shield RS485 ForArduino - Blue

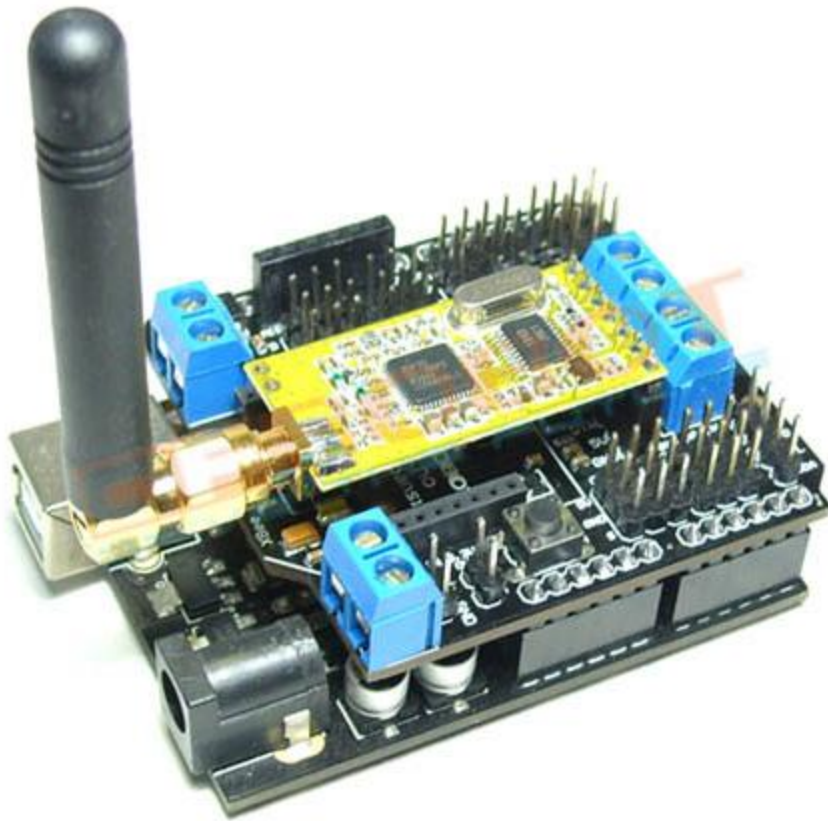
Dimensions: 2.24 in x 2.09 in x 0.71 in (5.7 cm x 5.3 cm x 1.8 cm)

Weight: 0.92 oz (26 g)

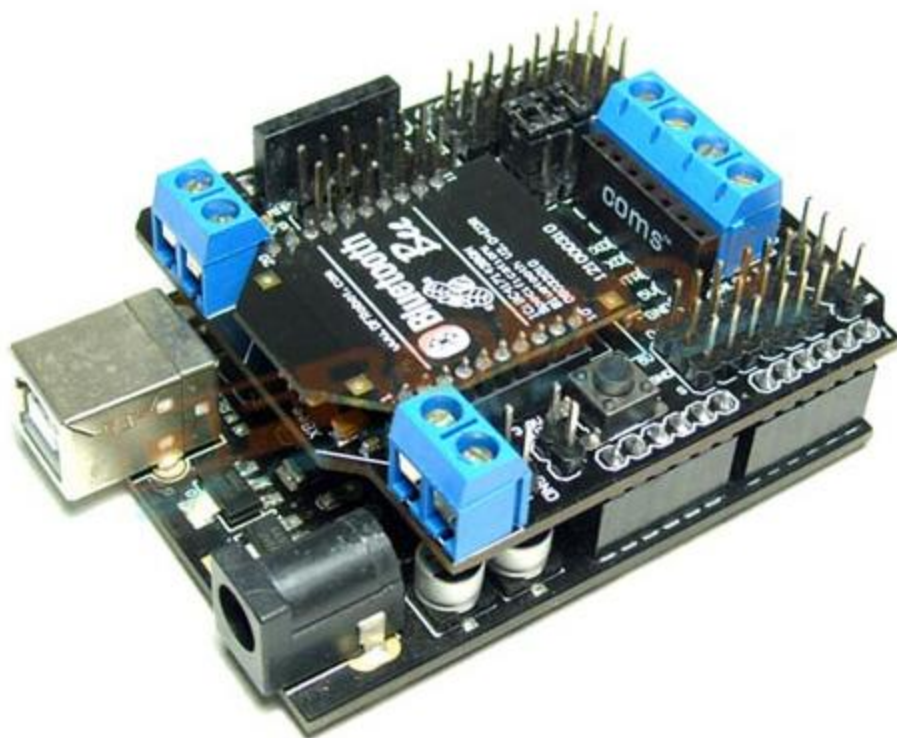




It can connect with XBee directly not need other shield



It can connecting APC220 directly



It can connecting Bluetooth Bee module directly





It can connect with Bluetooth V3 directly



it can connecting SD card easy



